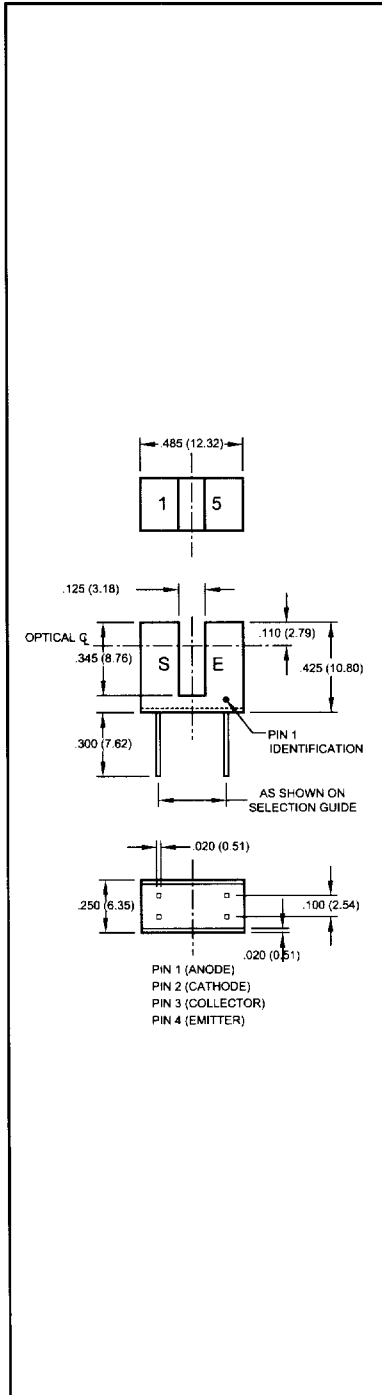


PHOTOTRANSISTOR OPTICAL INTERRUPTER SWITCHES



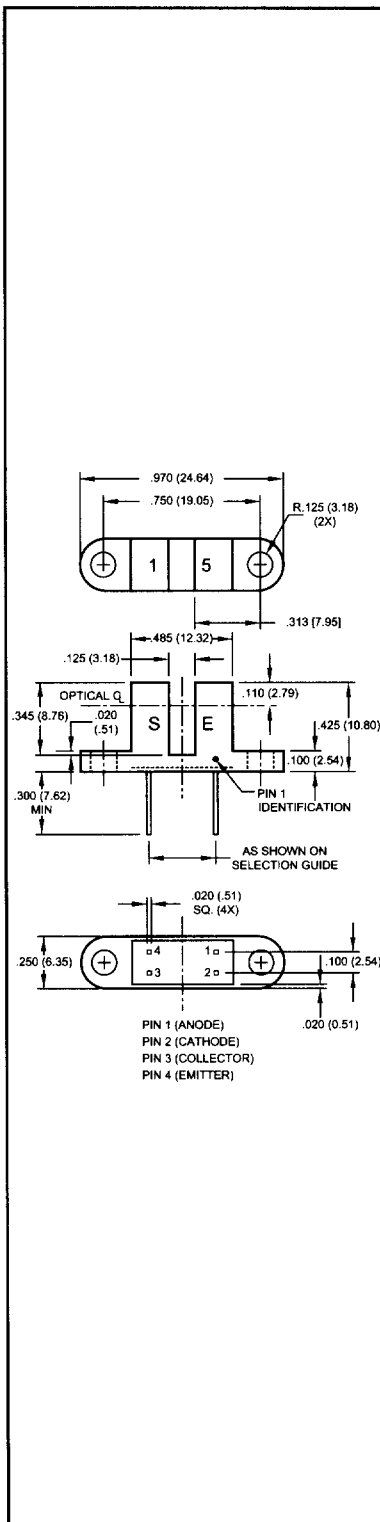
Part Number	Lead Spacing	Gap Width (mm)	Aperture Width LED/Sensor	Test Conditions I_F/V_{CE}	$I_{C(ON)}$ (mA) min	BV_{CEO} (V) min	Max Rating Table
OPB860N11	.320"	3.18	.010"/.010"	20 mA/5 V	0.50	30	K
OPB860N51	.320"	3.18	.050"/.010"	20 mA/5 V	0.50	30	K
OPB860N55	.320"	3.18	.050"/.050"	20 mA/5 V	0.50	30	K
OPB861N51	.320"	3.18	.050"/.010"	10 mA/5 V	1.00	30	K
OPB861N55	.320"	3.18	.050"/.050"	10 mA/5 V	1.00	30	K
OPB862N51	.320"	3.18	.050"/.010"	20 mA/6 V	1.80	30	K
OPB862N55	.320"	3.18	.050"/.050"	20 mA/6 V	1.80	30	K
OPB865N11	.220"	3.18	.010"/.010"	20 mA/5 V	0.50	30	K
OPB865N51	.220"	3.18	.050"/.010"	20 mA/5 V	0.50	30	K
OPB865N55	.220"	3.18	.050"/.050"	20 mA/5 V	0.50	30	K
OPB866N51	.220"	3.18	.050"/.010"	10 mA/5 V	1.00	30	K
OPB866N55	.220"	3.18	.050"/.050"	10 mA/5 V	1.00	30	K
OPB867N51	.220"	3.18	.050"/.010"	20 mA/6 V	1.80	30	K
OPB867N55	.220"	3.18	.050"/.050"	20 mA/6 V	1.80	30	K
QVA11123	.220"	3.18	.050"/.010"	20 mA/5 V	0.20	30	K
QVA11124	.220"	3.18	.050"/.010"	20 mA/5 V	0.50	30	K
QVA11223	.300"	3.18	.050"/.010"	20 mA/5 V	0.20	30	K
QVA11224	.300"	3.18	.050"/.010"	20 mA/5 V	0.50	30	K
QVA11323	.320"	3.18	.050"/.010"	20 mA/5 V	0.20	30	K
QVA11324	.320"	3.18	.050"/.010"	20 mA/5 V	0.50	30	K
QVA11133	.220"	3.18	.050"/.050"	20 mA/5 V	0.50	30	K
QVA11134	.220"	3.18	.050"/.050"	20 mA/5 V	1.00	30	K
QVA11233	.330"	3.18	.050"/.050"	20 mA/5 V	0.50	30	K
QVA11234	.330"	3.18	.050"/.050"	20 mA/5 V	1.00	30	K
QVA11333	.320"	3.18	.050"/.050"	20 mA/5 V	0.50	30	K
QVA11334	.320"	3.18	.050"/.050"	20 mA/5 V	1.00	30	K
QVA21113	.220"	3.18	.010"/.010"	20 mA/5 V	0.10	30	K
QVA21114	.220"	3.18	.010"/.010"	20 mA/5 V	0.20	30	K
QVA21213	.300"	3.18	.010"/.010"	20 mA/5 V	0.10	30	K
QVA21214	.300"	3.18	.010"/.010"	20 mA/5 V	0.20	30	K
QVA21313	.320"	3.18	.010"/.010"	20 mA/5 V	0.10	30	K
QVA21314	.320"	3.18	.010"/.010"	20 mA/5 V	0.20	30	K

Maximum Ratings Table K (Applies to all components on pages 44 and 45.)

Storage Temperature	-40 to +85° C
Operating Temperature	-40 to +85° C
Soldering:	
Lead Temperature (Iron)	240° C for 5 s
Lead Temperature (Flow)	260° C for 10 s
Input Diode	
Continuous Forward Current	5.0mA
Reverse Voltage	5.0V
Power Dissipation	100 mW

Output Transistor	
Collector-Emitter Voltage	30.0 V
Emitter-Collector Voltage	4.5 V
Power Dissipation	100 mW
Derate linearly at 1.67 mW/° C above 25° C for Input Diode and Output Transistor	

PHOTOTRANSISTOR OPTICAL INTERRUPTER SWITCHES



Part Number	Lead Spacing	Gap Width (mm)	Aperture Width LED/Sensor	Test Conditions I_F/V_{CE}	$I_{C(ON)}$ (mA) min	BV_{CEO} (V) min	Max Rating Table
OPB860T11	.320"	3.18	.010"/.010"	20 mA/5 V	0.50	30	K
OPB860T51	.320"	3.18	.050"/.010"	20 mA/5 V	0.50	30	K
OPB860T55	.320"	3.18	.050"/.050"	20 mA/5 V	0.50	30	K
OPB861T51	.320"	3.18	.050"/.010"	10 mA/5 V	1.00	30	K
OPB861T55	.320"	3.18	.050"/.010"	10 mA/5 V	1.00	30	K
OPB862T51	.320"	3.18	.050"/.050"	10 mA/5 V	1.00	30	K
OPB862T55	.320"	3.18	.050"/.010"	20 mA/.6 V	1.80	30	K
OPB865T11	.220"	3.18	.010"/.010"	20 mA/5 V	0.50	30	K
OPB865T51	.220"	3.18	.050"/.010"	20 mA/5 V	0.50	30	K
OPB865T55	.220"	3.18	.050"/.050"	20 mA/5 V	0.50	30	K
OPB866T51	.220"	3.18	.050"/.010"	10 mA/5 V	1.00	30	K
OPB866T55	.220"	3.18	.050"/.050"	10 mA/5 V	1.00	30	K
OPB867T51	.220"	3.18	.050"/.010"	20 mA/.6 V	1.80	30	K
OPB867T55	.220"	3.18	.010"/.010"	20 mA/.6 V	1.80	30	K
QVB11123	.220"	3.18	.050"/.010"	20 mA/5 V	0.20	30	K
QVB11124	.220"	3.18	.050"/.010"	20 mA/5 V	0.50	30	K
QVB11223	.300"	3.18	.050"/.010"	20 mA/5 V	0.20	30	K
QVB11224	.300"	3.18	.050"/.010"	20 mA/5 V	0.50	30	K
QVB11323	.320"	3.18	.050"/.010"	20 mA/5 V	0.20	30	K
QVB11324	.320"	3.18	.050"/.010"	20 mA/5 V	0.50	30	K
QVB11133	.220"	3.18	.050"/.050"	20 mA/5 V	0.50	30	K
QVB11134	.220"	3.18	.050"/.050"	20 mA/5 V	1.00	30	K
QVB11233	.300"	3.18	.050"/.050"	20 mA/5 V	0.50	30	K
QVB11234	.300"	3.18	.050"/.050"	20 mA/5 V	1.00	30	K
QVB11333	.320"	3.18	.050"/.050"	20 mA/5 V	0.50	30	K
QVB11334	.320"	3.18	.050"/.050"	20 mA/5 V	1.00	30	K
QVB21113	.220"	3.18	.010"/.010"	20 mA/5 V	0.10	30	K
QVB21114	.220"	3.18	.010"/.010"	20 mA/5 V	0.20	30	K
QVB21213	.300"	3.18	.010"/.010"	20 mA/5 V	0.10	30	K
QVB21214	.300"	3.18	.010"/.010"	20 mA/5 V	0.20	30	K
QVB21313	.320"	3.18	.010"/.010"	20 mA/5 V	0.10	30	K
QVB21314	.320"	3.18	.010"/.010"	20 mA/5 V	0.20	30	K